

Welcome to the NU® world!



”Save the taste!“

This is our international aim, especially when it comes to beer: perfect pleasure “from the keg to the glass”. Spülboy is an indispensable part of this quality chain and is worldwide appreciated by breweries and restaurateurs. Spülboy is setting standards for all bar areas because only hygienic, crystal clear glasses guarantee the unique taste.

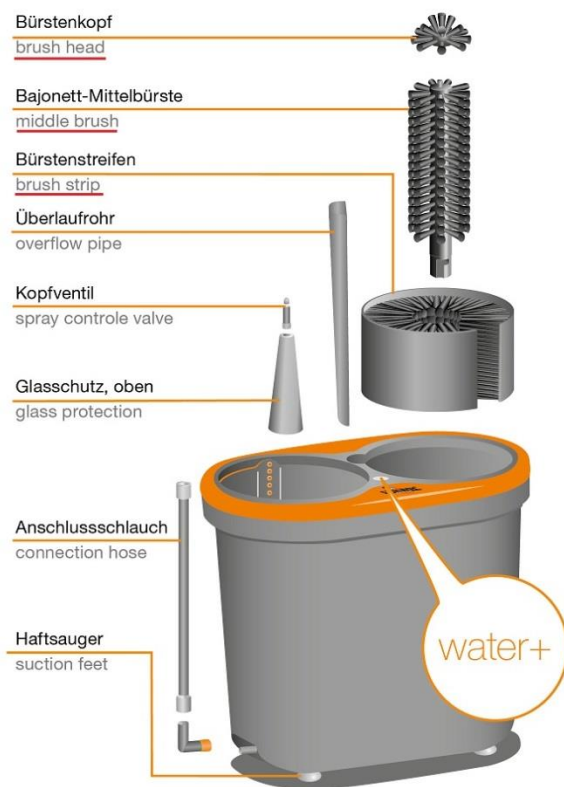
Your beer deserves it. And your customers will love it.

5 steps how to install & how to use

Hereinafter we would like to give you some short instructions how to install and operate your Spülboy NU properly.

1 Spülboy NU contents

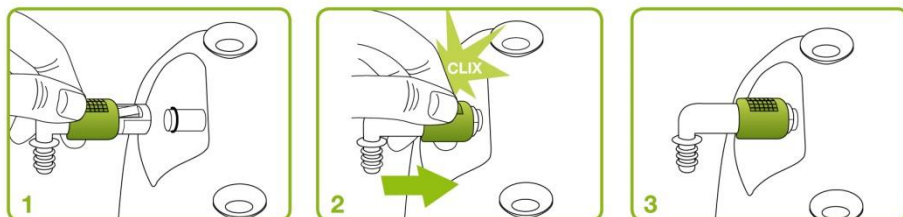
- 1 glass washing device
- 1 middle brush with head
- 1 brush strip
- 1 2- step rinse valve
- 1 overflow pipe
- 1 connection hose incl. easy clix fast connection & 3/8" thread



2 preparations for proper usage

Please open the plastic bag and control the completeness of your Spülboy NU → see drawing at step 1

Take out the connection hose and put it on the spout. Doing this please note that the securing slide of the easy clix connector is in position off. Check the correct position of the small rubber seal device side as well. If the easy clix sits on the spout properly please switch the secure slide in position on. A “clix” signals the lock.



3 installation to the water supply

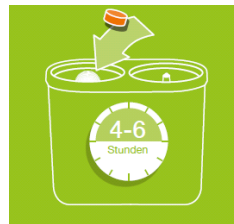
Place your NU in a sink or an appropriate tank. Now fix the end of the hose with the 3/8” thread to your faucet. Please pay attention of the correct position of the rubber seal hose side.



4 first commissioning and daily usage

Before first use please flush the Spülboy by operating the rise part for minimum 5 sec. Then fill the pre washing canister with fresh water from the tap up to the overflow. Now throw a Spülboy glass washing tab into the pre washing canister (canister with brushes).

Open the faucet and adjust the water pressure. The pressure is optimal if the horizontal water jets meet in the middle. Now the NU is ready to start.



Please check all glasses on residues (straws, limes, etc.) before washing. Scrub the glass up and down at least 4-6 times - don't twist. Afterwards rinse the glass for minimum 3 seconds to wash away the foam of the detergent.

5 decommission and daily cleaning

In case of daily use please clean your NU after decommission. Take out the overflow pipe in order to drain off the water. Take out the washer from the sink, remove the brushes and place them in the sink. To disinfect the brushes we recommend sprinkling 2 tblsp. of Spülboy sanitation powder over both brushes. Fill up the sink with hot water (40 – 50 C°) and leave them for at least 6 hours.

Now clean the Spülboy with a proper sponge or cloth.

